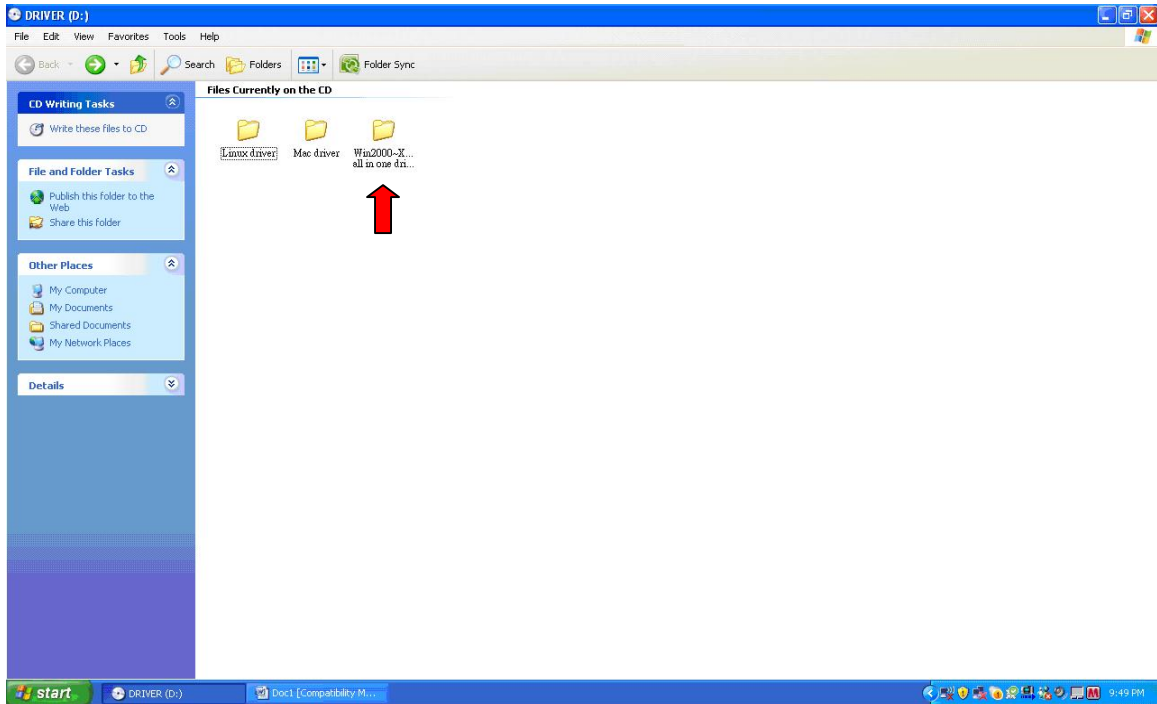


# Medi+Sure USB Installation Instruction

## Step 1

Please place USB driver disk in the CD drive. Select the operation system you used and then double click the on the file. e.g. Window System.

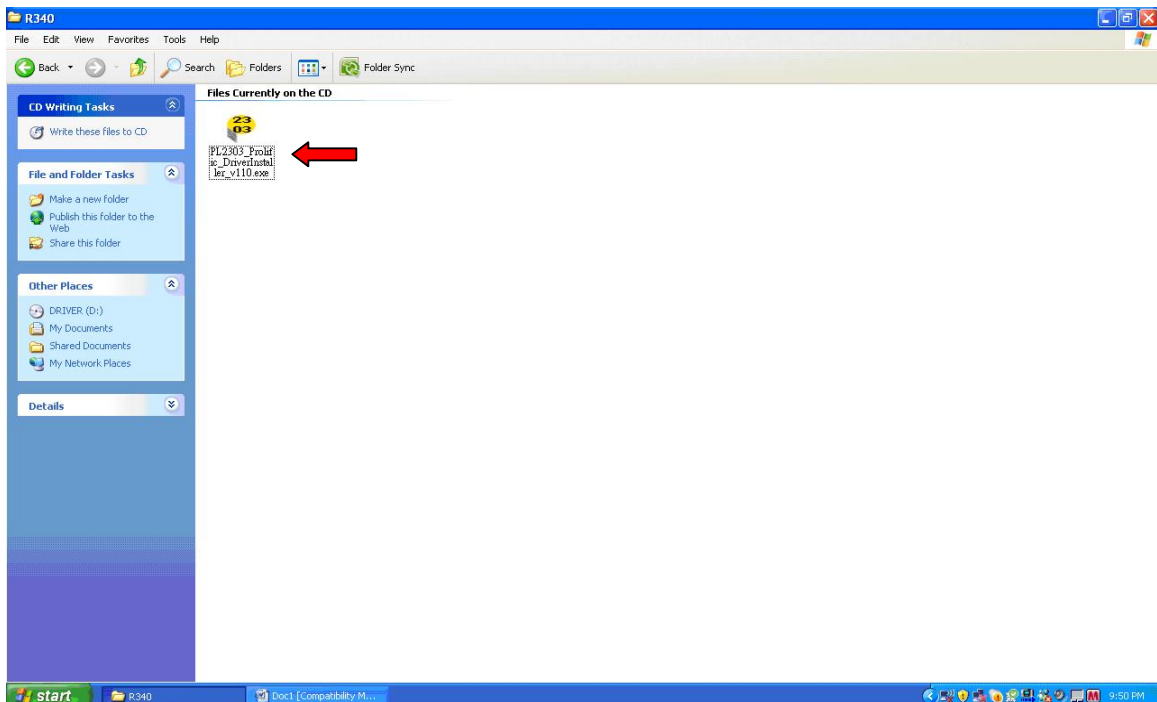


## Step 2

Please double click on “PL2303\_...” to enter the setup of Medi+Sure USB.

Click on “Next” to process the setup of Medi+Sure USB.

Installation completed, please click on “Finish”.

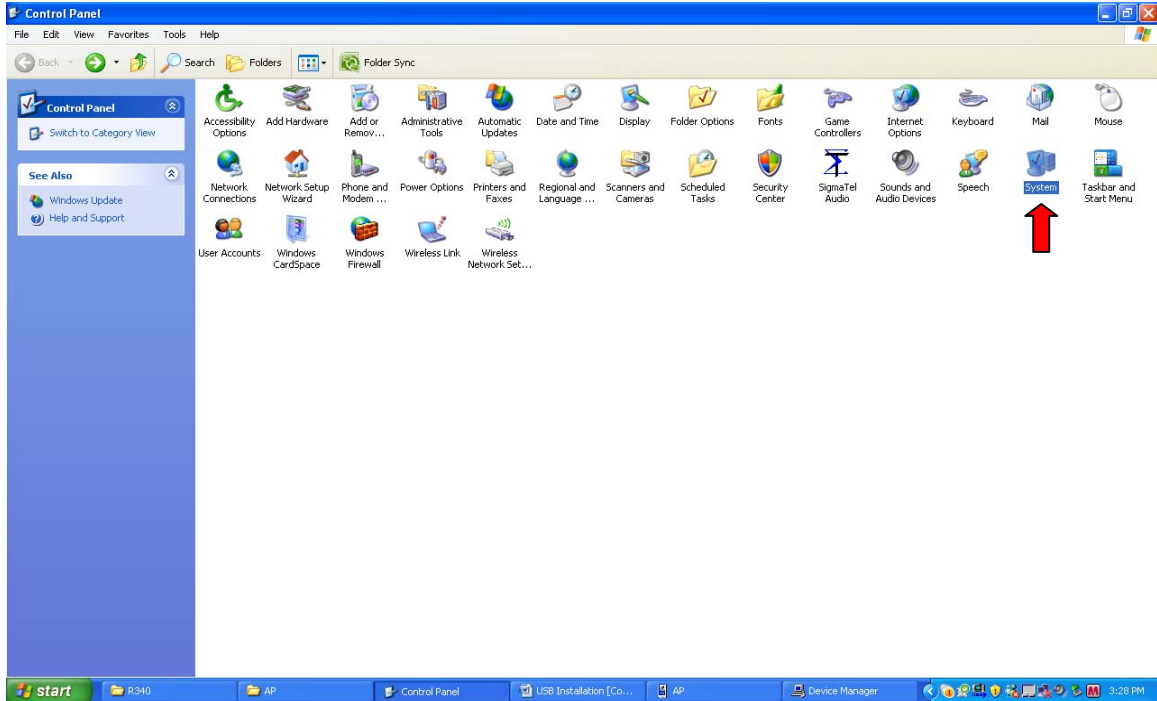


### Step 3

Please plug-in USB cable, and you computer can detect Medi+Sure USB automatically.

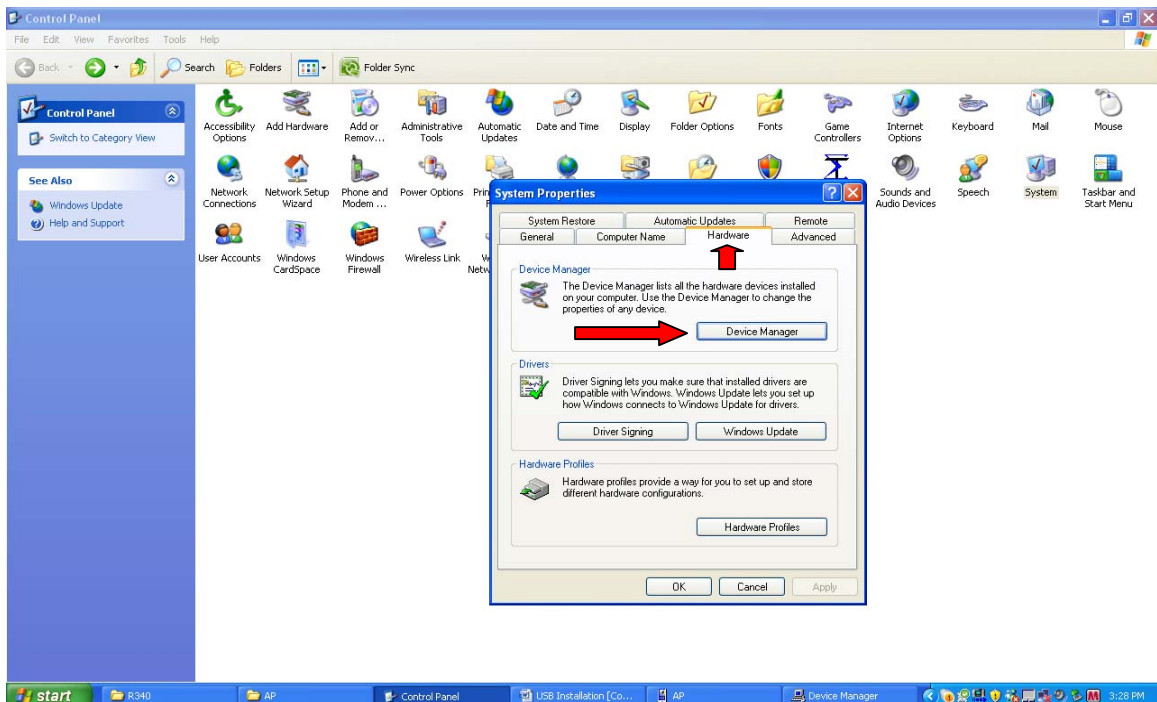
### Step 4

Please go to “Control Panel”, and double click on “System”.



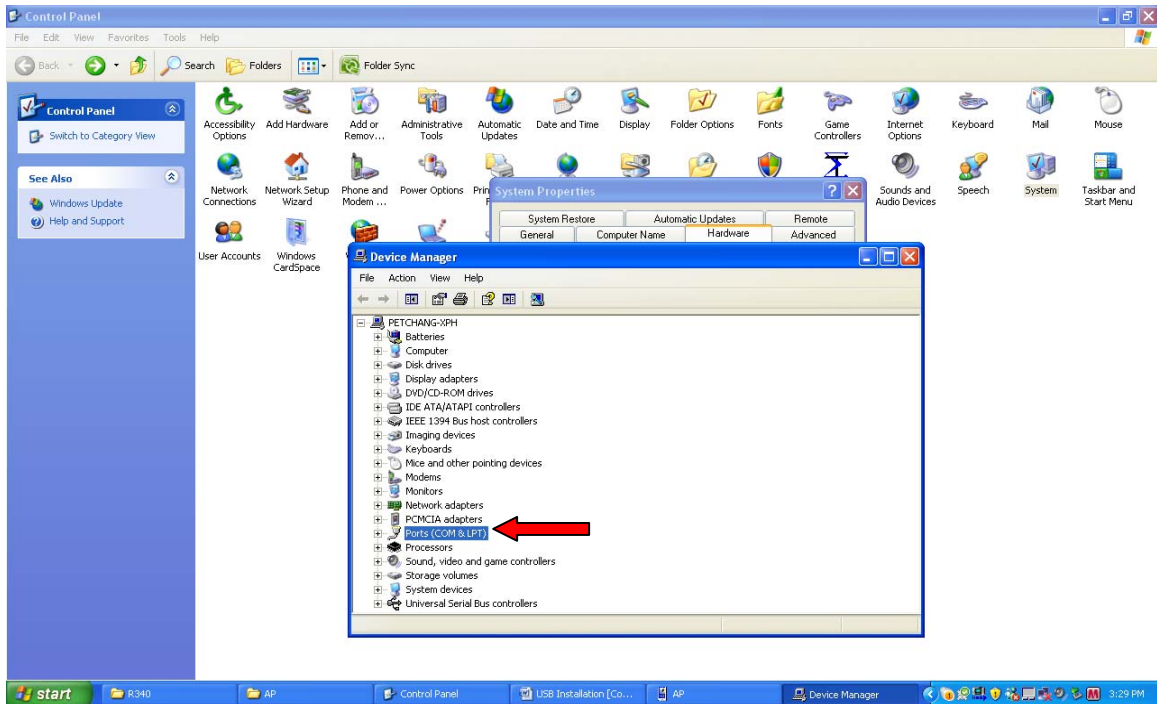
### Step 5

Please go to “Hardware” section on the top of System Properties, and click on “Device Manager”.



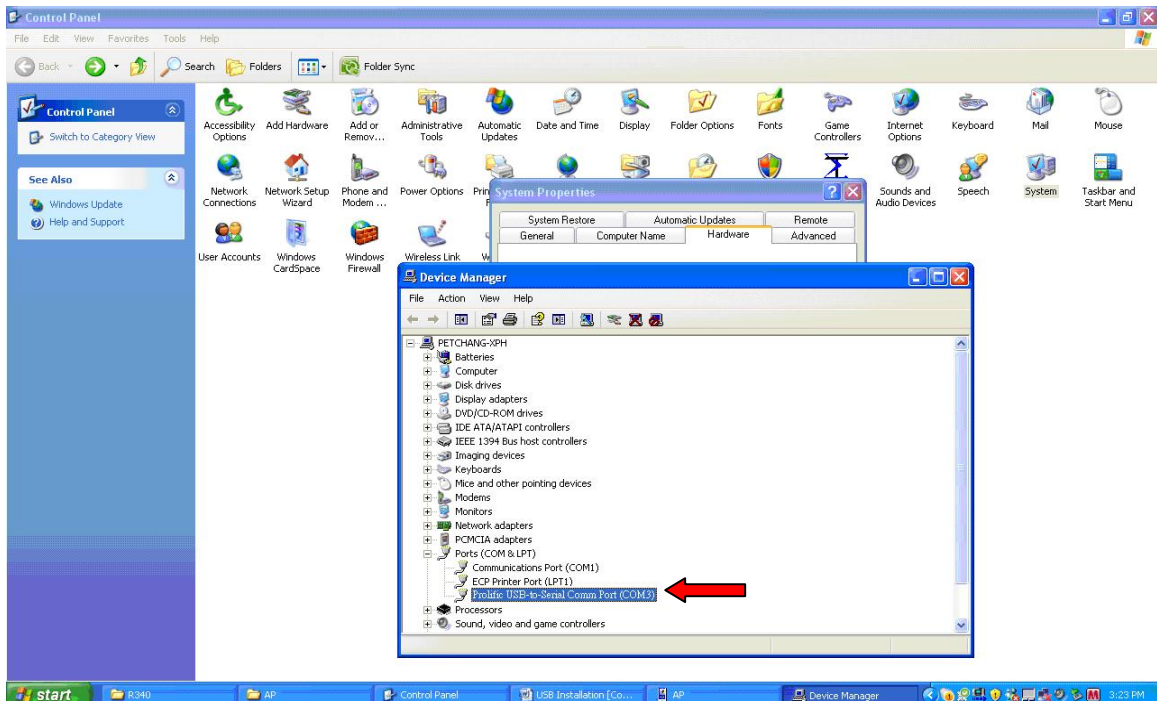
## Step 6

Please go to “Ports (COM & LPT)”, and double click on it for a COM Port location.



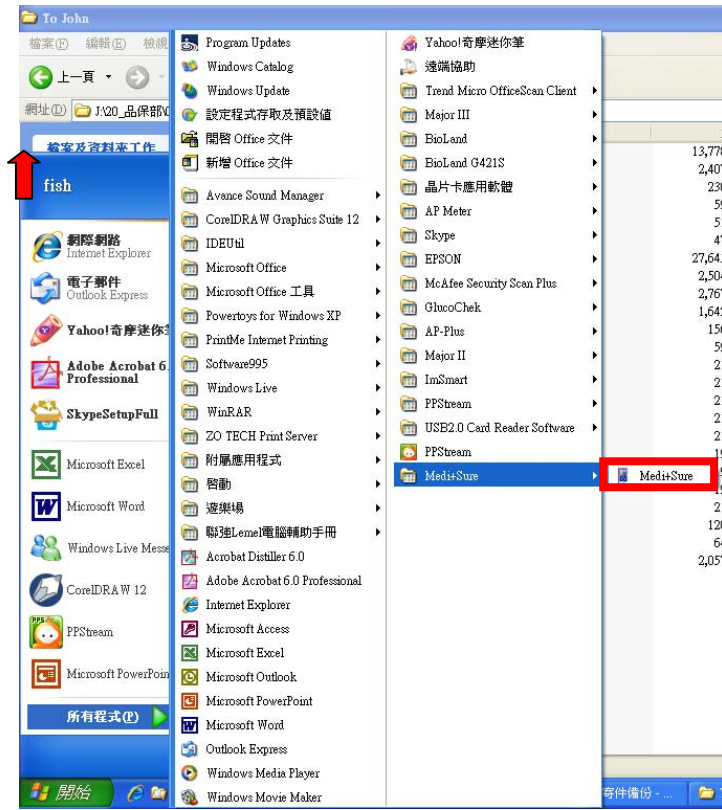
## Step 7

Please note the COM port location for Prolific USB-to Serial Comm Port (example on COM9)



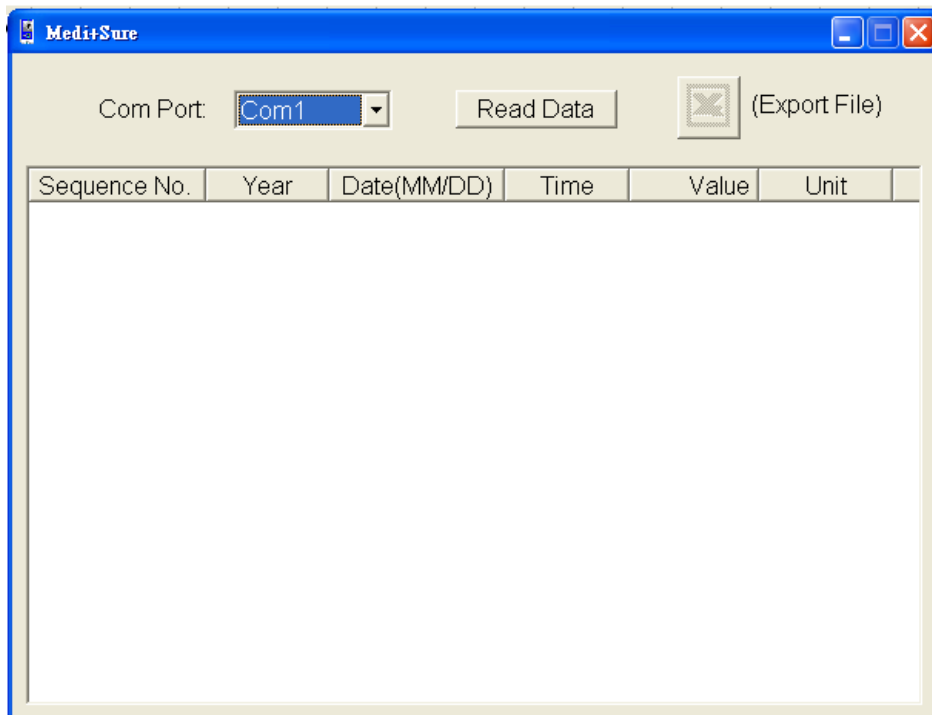
### Step 8

Please connect your Medi+Sure meter with USB cable. Go to the Medi+Sure meter icon from the Medi+Sure data management software, and double click on it.



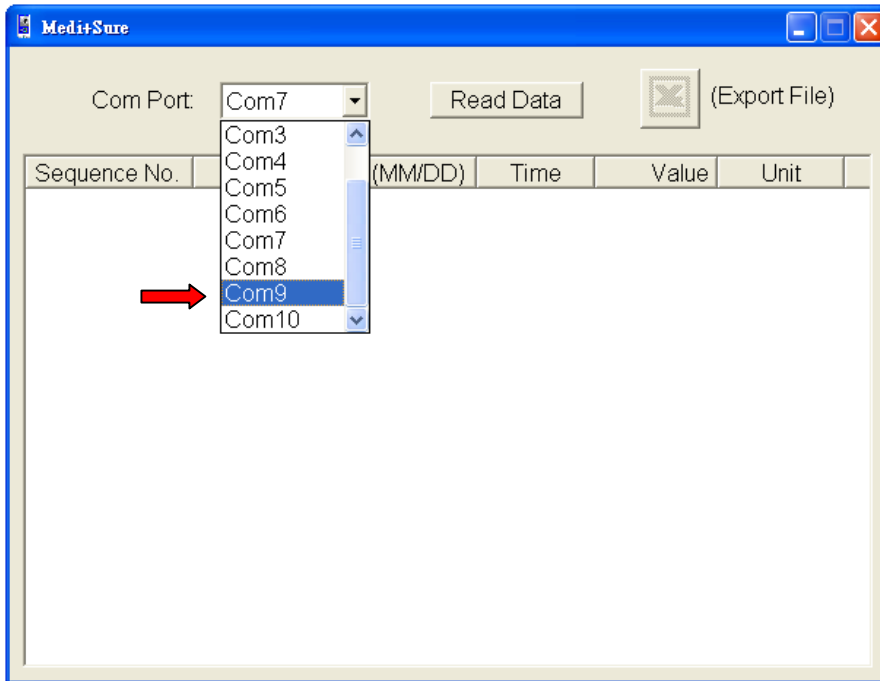
### Step 9

You are now in the data management of Medi+Sure glucose meter software.



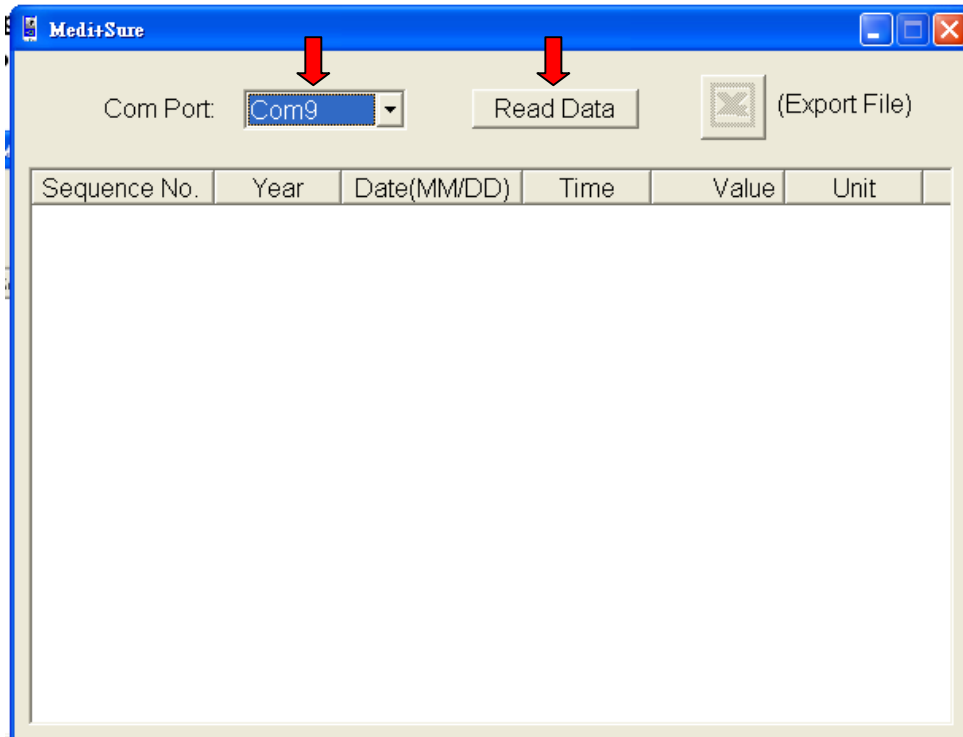
**Step 10**

Please pull down the arrow of “Com Port” on the top left of the data management and select the Com Port location (example on COM9).



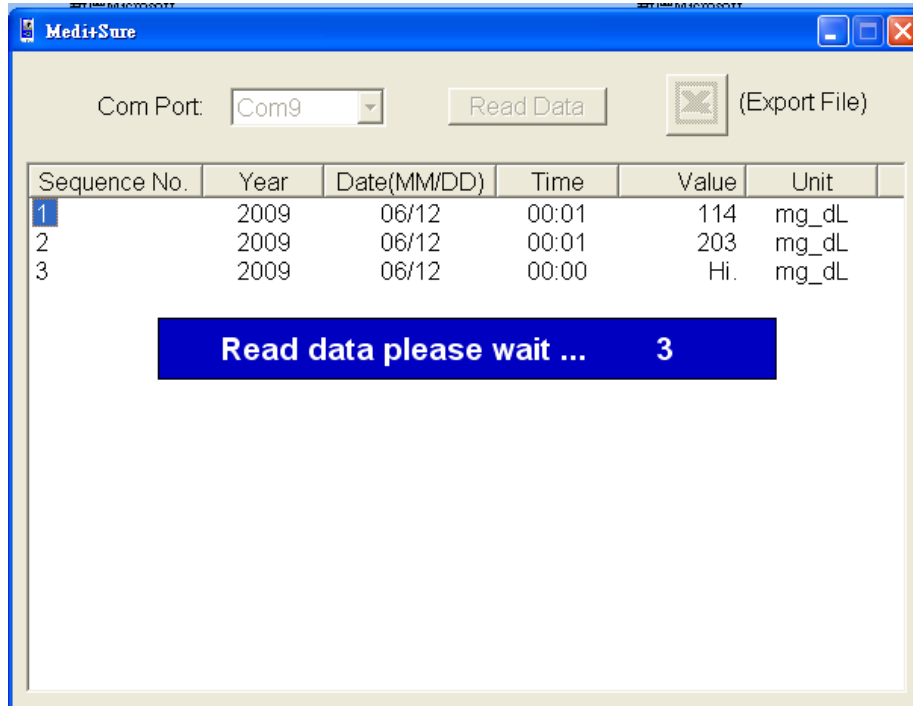
**Step 11**

Choose the noted Com Port number, and click on “Read Data” next to it.



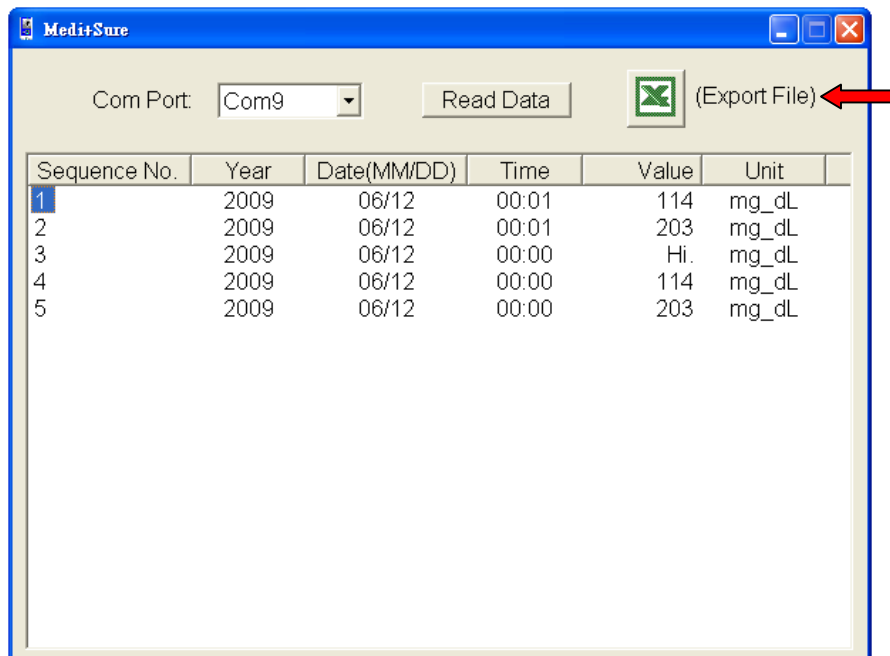
### **Step 12**

#### **Data downloading**



### **Step 13**

Data downloaded with the respective time and date. It is also available to be converted into Microsoft Excel format for statistical reviewing by simply clicking on Microsoft Excel icon after the completion of downloading.



### **Step 14**

Once the download is completed, the meter will shut off automatically.